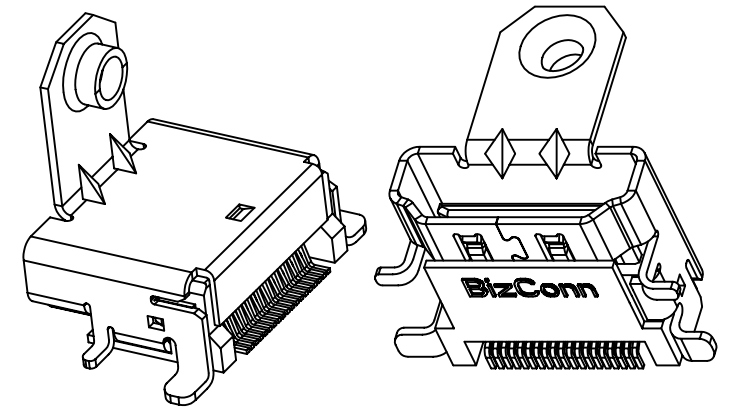
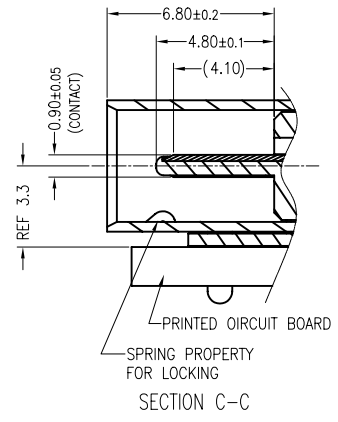
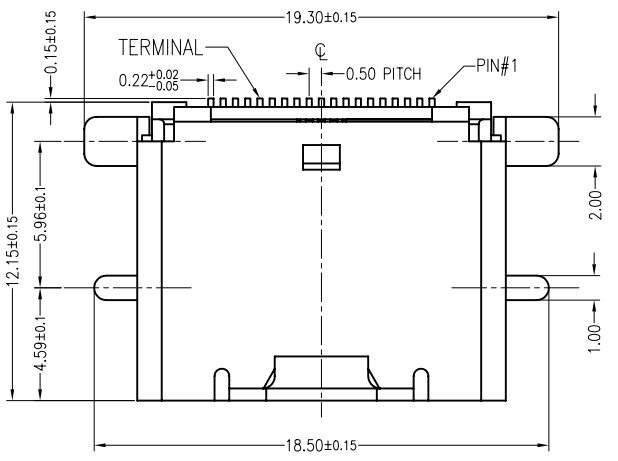
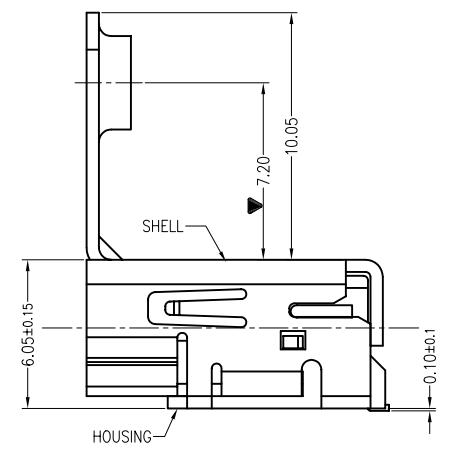
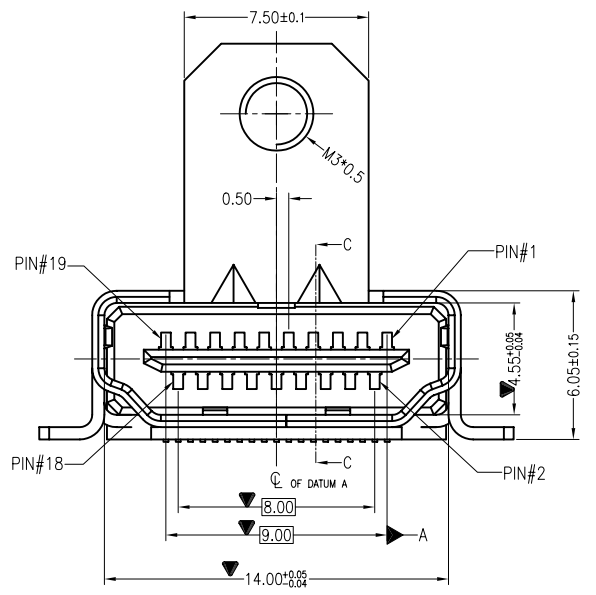
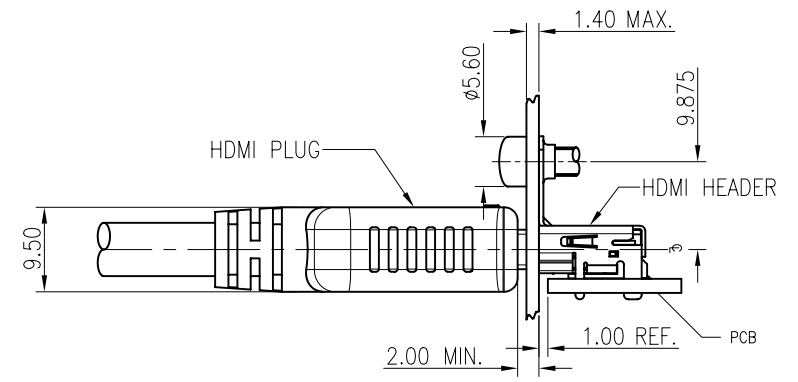


REV.	DATE	CONTENT	ECN.	NO.
X0	2005.01.21	ISSUE		



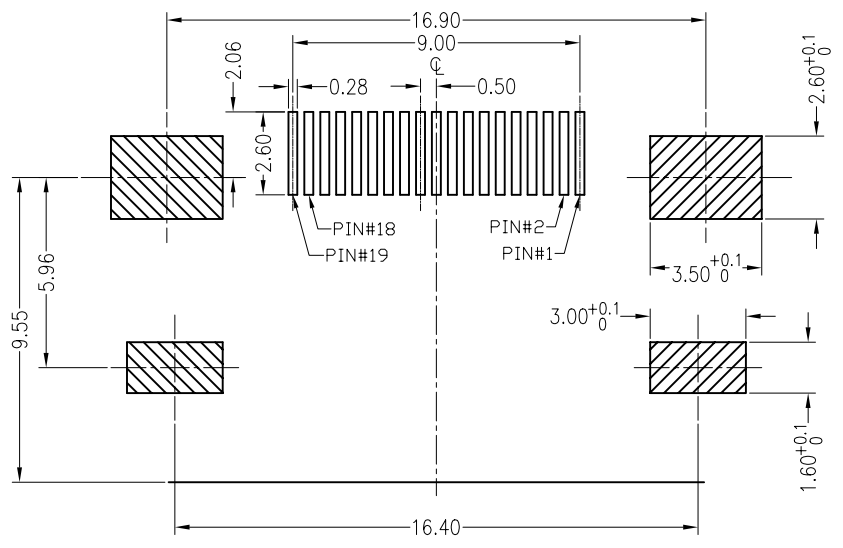
REFERENCE MOUNT DIMENSION (SCALE 1:4)



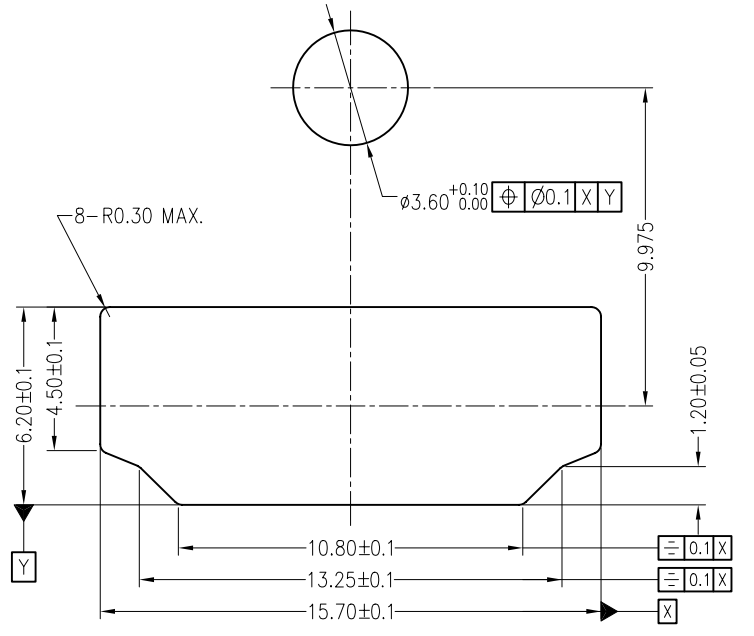
X. ± 0.50	X° ± 1°	UNITS: MM	NAME(INTENDED USE)	BizConn
.X ± 0.38	.X° ± 0.5°	MAT'L:	SALES FOR HDMI-19PIN HEADED(SMT) with Flange Shell	BizConn International Electronic CO.,LTD.
.XX ± 0.20	.XX±	SEE NOTE	PART NO.(INTENDED USE)	FILE NO.:
.XXX± 0.10	.XXX±	FINISH	662-19LNBSAABNA	WDR-032-05***
QUALITY SYMBOLS		SEE NOTE	APPD:	PROJECT NO.
CRITICAL=▽		Q'TY	CHKD:	BC-M05***
MAJOR=▼		DR: 程襄東 2005.01.21		SCALE SHEET REV.
				NONE 1/2 X0

REV.	DATE	CONTENT	ECN.	NO.
X0	2005.01.21	ISSUE		

RECOMMENDED P.C.B. PATTERN LAYOUT(T=1.6±0.1)



REFERENCE PANEL CUT OUT DIMENSION



NOTE:

- MATERIAL
HOUSING: GLASS FILLED HEAT-RESISTED RESIN. UL94V-0
TERMINAL: COPPER ALLOY
SHELL COPPER ALLOY
- PLATING
TERMINAL : (CONTACT AREA) GOLD(Au)
(SOLDERTAIL AREA) TIN-COPPER
(UNDER-PLATING) NICKEL(Ni)
SHELL : PLATING NICKEL (Ni)
- PRODUCT CODE
662 - 19 * * * ** * * * *
 - T--SMT(鐵殼R/A) ; D--R/A DIP
 - V--180°SMT ; A--SMT(鐵殼SMT)
 - MARK: N--NO MARK ; B--BIZCONN
 - COLOR: B--Black ; W--White
 - A:有接地片(M3*0.5) B:有接地片(4-40 UNC)
 - N:無接地片
 - PLATING:
 - SA--15u"Au, 50u"Ni,100u"Sn;
 - SD--5u"Au,50u"Ni,100u"Sn;
 - SE--10u"Au,50u"Ni,100u"Sn;
 - SF--30u"Au,50u"Ni,100u"Sn;
 - Terminal Material:
 - P--PHOSPHOR BRONZE
 - B--BRONZE
 - SHELL PLATING:
 - N--PLATING Ni
 - T--PLATING Sn
 - Z--PLATING Zn
 - G--GOLD FLASH
 - HOUSING:
 - P:PBT L:LCP N:NYLON
 - 19--19PIN ; 29--29PIN
 - 662--HDMI HEADER

X. ±0.50	X° ±1°	UNITS: MM	NAME(INTENDED USE)	BizConn
.X ±0.38	.X° ±0.5°	MAT'L:	SALES FOR HDMI-19PIN HEADED(SMT) with Flange Shell	BizConn International Electronic CO.,LTD.
.XX ±0.20	.XX° ±	SEE NOTE	PART NO.(INTENDED USE)	FILE NO.:
.XXX ±0.10	.XXX° ±	FINISH	662-19LNBSAABNA	WDR-032-05***
QUALITY SYMBOLS	Q'TY	SEE NOTE	APPD:	PROJECT NO.
CRITICAL=▽			CHKD:	BC-M05***
MAJOR=▼			DR: 程襄東 2005.01.21	SCALE SHEET REV.
				NONE 2/2 A1